

品牌源于品质, 口碑来自真诚  
Brand comes from quality, and reputation comes from sincerity.

# PLASTIC MACHINE

气泡膜制袋机专业制造商  
Professional Manufacturer of Bubble  
Bag Making Machine

XINYE

瑞安市欣业包装机械有限公司  
Ruian Xinye Packaging Machine Co.,Ltd

厂址: 浙江省瑞安市上望镇永光工业区(新104国道旁)  
手机: 13958801308  
销售部(国内): 86-577-65162211  
销售部(国外): 86-577-65132286 65162200  
传真: 86-577-65132727  
邮编: 325206  
网址: //www.raxinye.com  
邮箱: xinye@cnxinye.cn

Add: No. 104 Main Roadside, Yongguang Zone,  
Shangwang, Ruian, Zhejiang, China  
M.T: 13958801308  
Sales Dept (Domestic): 86-577-65162211  
Sales Dept (Foreign): 86-577-65132286 65162200  
Fax: 86-577-65132727  
P.C: 325206  
http://www.raxinye.com  
E-mail: xinye@cnxinye.cn



瑞安市欣业包装机械有限公司  
Ruian Xinye Packaging Machine Co.,Ltd



**中国塑料包装协会金牌供应商**

— 瑞安市欣业包装机械有限公司

**THE GOLD SUPPLIER OF CHINA  
PLASTIC PACKAGING ASSOCIATION**

— RUIAN XINYE PACKAGING MACHINE CO., LTD

瑞安市欣业包装机械有限公司位于浙南沿海经济活跃的瑞安市，专业生产塑料包装系列机械设备，历史悠久。公司主要产品有制袋机、印刷机、吹膜机等。

企业自创办以来，本着“以品质换取顾客的信赖”“持续改进提高，满足顾客需要”的方针，逐渐赢得了广大客户的支持和信赖，产品逐步走出国门，远销东南亚、中东、中亚、俄罗斯、欧美等多个国家和地区。随着数字化信息时代的来临，欣业全体员工将以年轻、充满活力的姿态，来迎接新世纪的机遇与挑战。

Ruian Xinye Packaging Machine Co., Ltd locates in economic vibrant Ruian City on the southeast coast of Zhejiang Province. With long history, the company is specialized in manufacturing plastic packaging equipments such as bag making machine, printing machine, film blowing machine, etc.

Since its establishment, with the purposes of "Gain the customer's confidence based on good quality,"and "Improve continuously, meet customer's needs", we have won the support and trust from most national and international customers, from the Southeast Asia, the Middle East, Russia, America, Europe and Africa, etc. With the arrival of age of the digital information, Xinye staff in youthful and energetic attitude meet the opportunities and challenges of new century.



**欣业机械**  
XINYE MACHINE

气泡膜制袋机专业制造商  
Professional Manufacturer of Bubble  
Bag Making Machine

# XYXFD

Automatic Bubble Film Envelop Making Machine

全自动气泡膜信封制袋机

Tow by One. None-stop material changing

【一出二可不停机换料】

## USAGE CHARACTERISTIC

- 本机是制作已复合气泡膜材料全自动设备。适用材料：PE共挤膜复合、珠光膜复合、铝箔复合。
- 该设备功能集封合、折边、上胶条、跟踪、裁切为一体。并配备不停机换料、双放料、双跟踪等功能。由电脑全自动控制完成整个制袋过程。生产的气泡袋封线牢固、平整、长度准确。是生产复合气泡袋的首选设备。

- Our bubble bag making equipment specially designed for compound bubble film. Suitable materials: PE co-extrusion film with laminated, pearl film with laminated, aluminium foil film, PE foam thermal compound, PE foam laminated materials.
- The machine has laminating, sealing, folding, stripping, tracking, cutting functions in one line, it also equips none-stop material changing, double unwinding, double phototeil tracking functions which are controlled by computer. The end product is in good condition of firm, smooth, accurate length. It is the best equipment for the producing kraft paper bubble bag.



## 800型MODEL 主要技术参数 MAIN TECHNICAL VARIABLES

型号 Model	800#	800#
适用材料 Suitable material	复合气泡膜、热熔胶、离型纸	Air bubble film(25-150g), tape
材料要求 Material requirements	PE共挤复合、珠光膜复合、铝箔复合	PE co-extruding and laminating film, pearlised film with laminated film, aluminium foil
最大放卷直径 Max. feeding diameter	气泡膜 Φ1500mm	bubble film Φ1500mm
最大放卷宽度 Max. feeding width	气泡膜 ≤1500mm	bubble film ≤1500mm
最大袋子长度 Max. bag length	≤750mm(包含舌口)	≤750mm(including the tongue of bag)
最大袋子宽度 Max. bag width	≤800mm	≤800mm
制袋速度 speed of bag making	100-200m/min(单出)	100-200m/min(Single line)
	200-400m/min(双出)	200-400m/min(Double line)
整机功率 Total power	26KW	26KW
工作电压 Voltage	3phase AC380V 50Hz	3phase AC380V 50Hz
机器尺寸 L×W×H	19×2.8×3.4m	19×2.8×3.4m



该机器还可增加  
在线复合部位  
Option:Inline lamination function



该机器还可增加  
拉链袋部位  
Option:Zipper lock function



## 1000型MODEL 主要技术参数 MAIN TECHNICAL VARIABLES

型号 Model	1000#	1000#
适用材料 Suitable material	复合气泡膜、热熔胶、离型纸	Air bubble film(25-150g), tape
材料要求 Material requirements	PE共挤复合、珠光膜复合、铝箔复合	PE co-extruding and laminating film, pearlised film with laminated film, aluminium foil
最大放卷直径 Max. feeding diameter	气泡膜 Φ1500mm	bubble film Φ1500mm
最大放卷宽度 Max. feeding width	气泡膜 ≤1800mm	bubble film ≤1800mm
最大袋子长度 Max. bag length	≤950mm(包含舌口)	≤950mm(including the tongue of bag)
最大袋子宽度 Max. bag width	≤800mm	≤800mm
制袋速度 speed of bag making	80-160m/min(单出)	80-160m/min(Single line)
	160-320m/min(双出)	160-320m/min(Double line)
整机功率 Total power	28KW	28KW
工作电压 Voltage	3phase AC380V 50Hz	3phase AC380V 50Hz
机器尺寸 L×W×H	19×3.0×3.4m	19×3.0×3.4m



## XYLTD

Automatic Bubble Film Envelop Making Machine

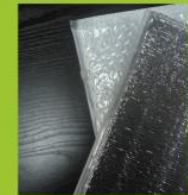
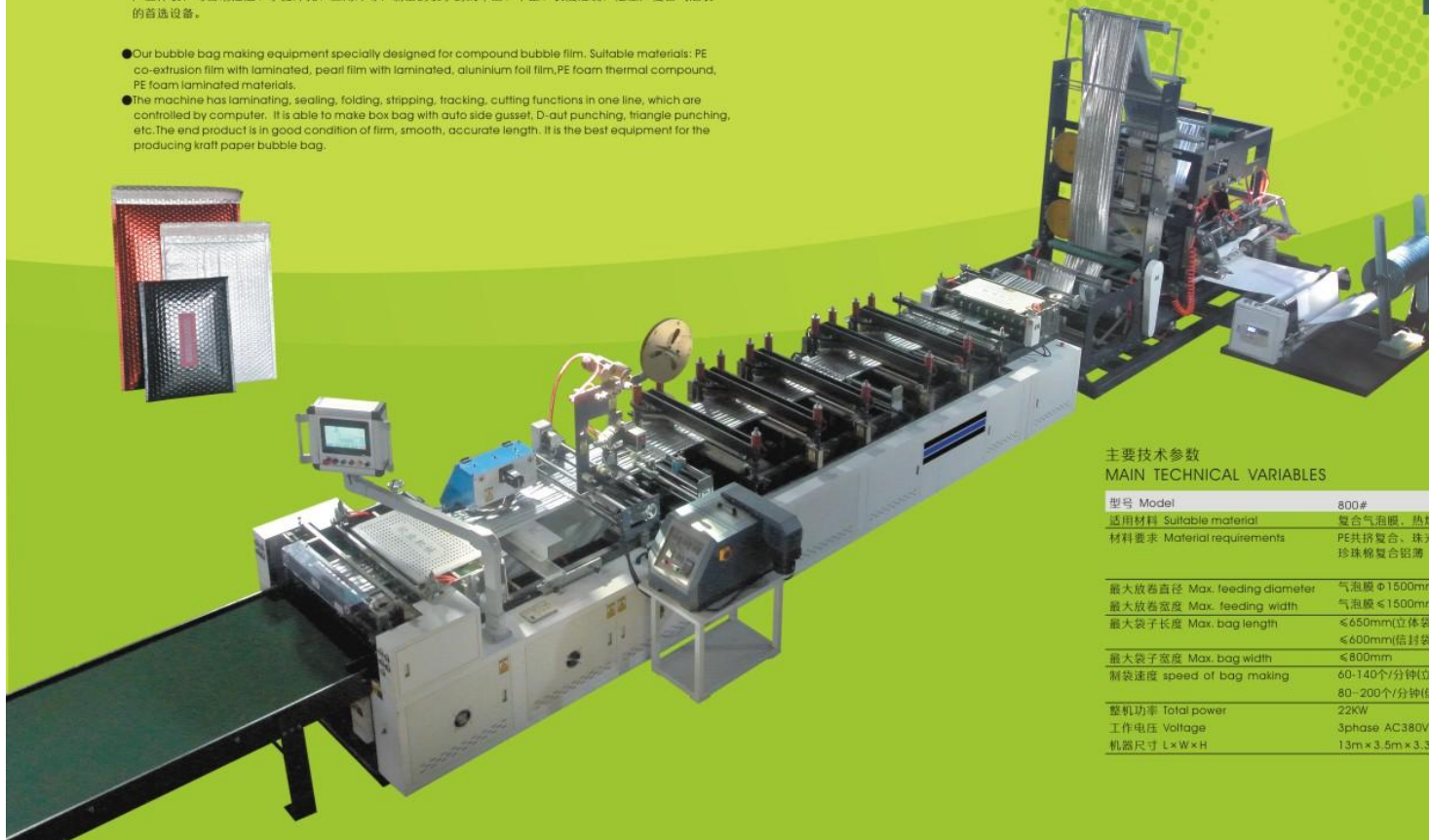
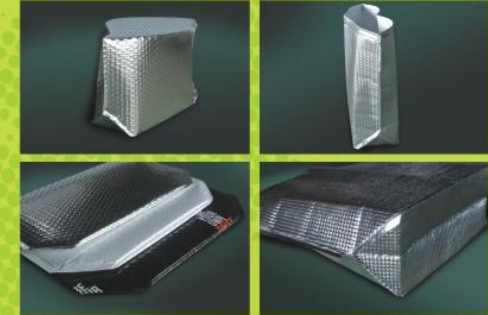
全自动气泡膜信封袋制袋机

Box bag/Envelope bag

【立体袋/信封袋】

## USAGE CHARACTERISTIC

- 本机是制作已复合气泡材料全自动设备。适用材料：PE共挤膜复合、珠光膜复合、铝箔复合、珍珠棉热复合、珍珠棉淋膜。
- 该设备功能集封合、折边、上胶条、跟踪、裁切为一体。由电脑全自动控制完成整个制袋过程。本机还可生产立体袋，可自动插边、手操冲孔、三角冲等。制出的袋子封线牢固、平整、长度准确。是生产复合气泡袋的首选设备。
- Our bubble bag making equipment specially designed for compound bubble film. Suitable materials: PE co-extrusion film with laminated, pearl film with laminated, aluminium foil film, PE foam thermal compound, PE foam laminated materials.
- The machine has laminating, sealing, folding, stripping, tracking, cutting functions in one line, which are controlled by computer. It is able to make box bag with auto side gusset, D-out punching, triangle punching, etc. The end product is in good condition of firm, smooth, accurate length. It is the best equipment for the producing kraft paper bubble bag.



该机器还可增加  
拉链袋部位  
Option:Zipper lock function

### 主要技术参数 MAIN TECHNICAL VARIABLES

型号 Model	800#	800#
适用材料 Suitable material	复合气泡膜、热熔胶、离型纸	Air bubble film(25-150g), tape
材料要求 Material requirements	PE共挤复合、珠光膜复合、铝箔复合、珍珠棉复合铝箔	PE co-extruding and laminating film, pearlised film with laminated, aluminium foil Foiled EPE foam bag
最大放卷直径 Max. feeding diameter	气泡膜 ≤1500mm	bubble film φ1500mm
最大放卷宽度 Max. feeding width	气泡膜 ≤1500mm	bubble film φ1500mm
最大袋子长度 Max. bag length	≤650mm(立体袋包含舌口) ≤600mm(信封袋包含舌口)	≤650mm(Box bottom bag including the tongue of bag) ≤600mm(Envelope bag including the tongue of bag)
最大袋子宽度 Max. bag width	≤800mm	≤800mm
制袋速度 speed of bag making	60-140个/分钟(立体袋) 80-200个/分钟(信封袋)	60-140pcs/min(Box bottom bag) 80-200pcs/min(Envelope bag)
整机功率 Total power	22KW	22KW
工作电压 Voltage	3phase AC380V 50Hz	3phase AC380V 50Hz
机器尺寸 L×W×H	13m×3.5m×3.3m	13m×3.5m×3.3m

## XYQB-A

Bubble Film Bag Making Machine  
普通气泡膜制袋机



- 本机具自动计数、自动报警。制袋长度由按键控制，带自动折边放料，可双排作业，成品整叠收集输送装置，使用方便。
- 适用材料：气泡膜、复合气泡膜、珍珠棉。  
封口牢固，速度稳定均匀，可制作平口及锁口气泡袋。

- The machine is equipped with auto-counting, auto-folding, auto-unwinding and auto-alarming system. The bag making length is controlled by switch. It can produce bags in two lines with devices to collect and delivery end products in stack, which is convenient to operate.
- Applicable materials: bubble film, pearl cotton.  
The seal is strong, the speed is stable and uniform, and the flat bubble bags and bubble bags with tongue can be made.

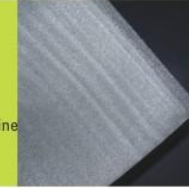


### 主要技术参数 MAIN TECHNICAL VARIABLES

型号 Model	XYQB-800	XYQB-1000	XYQB-1200
制袋宽度 Bag Width	10-750mm	10-950mm	10-1150mm
制袋长度 Bag Length	50-990mm	60-990mm	60-990mm
制袋速度 Speed	20-230pcs/min	20-200pcs/min	20-160pcs/min
总功率 Total Power	3.2kw	4kw	5.5kw
机器重量 Weight of Machine	1000kg	1200kg	1500kg
外形尺寸 Overall Dimension(L×W×H)	4.4×2.8×1.75m	4.5×3.0×1.95m	4.5×3.5×2.0m

## XYQB-B

Bubble Film Bag / Pearlized Film Bag Making Machine  
普通气泡膜/珍珠棉制袋机



- 本机具自动计数、自动报警。制袋长度由按键控制，带自动折边放料，可双排作业，成品整叠收集输送装置，使用方便。
- 适用材料：气泡膜、复合气泡膜、珍珠棉。  
封口牢固，速度稳定均匀，可制作平口及锁口气泡袋。

- The machine is equipped with auto-counting, auto-folding, auto-unwinding and auto-alarming system. The bag making length is controlled by switch. It can produce bags in two lines with devices to collect and delivery end products in stack, which is convenient to operate.
- Applicable materials: bubble film, pearl cotton.  
The seal is strong, the speed is stable and uniform, and the flat bubble bags and bubble bags with tongue can be made.



### 主要技术参数 MAIN TECHNICAL VARIABLES

型号 Model	XYQB-800	XYQB-1000	XYQB-1200
制袋宽度 Bag Width	10-750mm	10-950mm	10-1150mm
制袋长度 Bag Length	50-990mm	60-990mm	60-990mm
制袋速度 Speed	20-230pcs/min	20-200pcs/min	20-160pcs/min
总功率 Total Power	3.2kw	4kw	5.5kw
机器重量 Weight of Machine	1000kg	1200kg	1500kg
外形尺寸 Overall Dimension(L×W×H)	4.4×2.8×1.75m	4.5×3.0×1.95m	4.5×3.5×2.0m

## XYQB-C

Bubble Film Three-side Sealing Bag Making Machine  
气泡膜三边封制袋机



www.raxinye.com

- 本机具自动计数、自动报警。制袋长度由按键控制，带自动折边放料，可双排作业，成品整叠收集输送装置，使用方便。
- 适用材料：气泡膜、复合气泡膜、珍珠棉。  
封口牢固，速度稳定均匀，可制作平口及错口气泡袋。

- The machine is equipped with auto-counting, auto-folding, auto-unwinding and auto-alarming system. The bag making length is controlled by switch. It can produce bags in two lines with devices to collect and delivery end products in stack, which is convenient to operate.
- Applicable materials: bubble film, pearl cotton.  
The seal is strong, the speed is stable and uniform, and the flat bubble bags and bubble bags with tongue can be made.



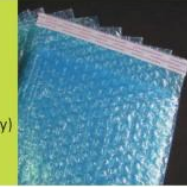
### 主要技术参数

#### MAIN TECHNICAL VARIABLES

型号 Model	XYQB-1300	XYQB-1600	XYQB-1800
制袋宽度 Bag Width	200-1250mm	200-1550mm	200-1750mm
制袋长度 Bag Length	80-1600mm	80-1600mm	80-1600mm
制袋速度 Speed	15-80pcs/min	15-80pcs/min	15-80pcs/min
总功率 Total Power	9.8kw	10.8kw	11.8kw
机器重量 Weight of Machine	1500kg	1650kg	2000kg
外形尺寸 Overall Dimension(L×W×H)	4.4×2.8×1.75m	4.5×3.0×1.95m	4.5×3.5×2.0m

## XYQB-D

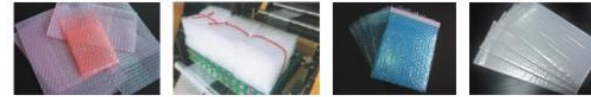
Bubble Film Bag Making Machine(Auto glue spray)  
气泡膜制袋机(自动喷胶)



www.raxinye.com

- 本机具自动计数、自动报警。制袋长度由按键控制，带自动折边放料，可双排作业，成品整叠收集输送装置，使用方便。
- 适用材料：气泡膜、复合气泡膜、珍珠棉。  
封口牢固，速度稳定均匀，可制作平口及错口气泡袋。

- The machine is equipped with auto-counting, auto-folding, auto-unwinding and auto-alarming system. The bag making length is controlled by switch. It can produce bags in two lines with devices to collect and delivery end products in stack, which is convenient to operate.
- Applicable materials: bubble film, pearl cotton.  
The seal is strong, the speed is stable and uniform, and the flat bubble bags and bubble bags with tongue can be made.



### 主要技术参数

#### MAIN TECHNICAL VARIABLES

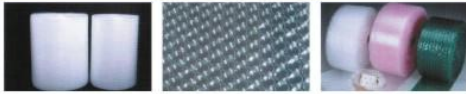
型号 Model	XYQB-800	XYQB-1000	XYQB-1200
制袋宽度 Bag Width	100-750mm	100-950mm	100-1150mm
制袋长度 Bag Length	100-1000mm	100-1000mm	100-1000mm
制袋速度 Speed	20-150pcs/min	20-130pcs/min	20-110pcs/min
总功率 Total Power	8.5kw	4kw	10.5kw
机器重量 Weight of Machine	1300kg	1500kg	1700kg
外形尺寸 Overall Dimension(L×W×H)	4.4×2.8×1.75m	4.5×3.0×1.95m	4.5×3.5×2.0m



## XYPE-2LA

2 Layer Air Bubble Film Machine-1 Screw

两层气泡膜机-单螺杆挤出



- 本机器可生产2层气泡膜（底层+气泡），挤出机为单螺杆设计。
- 主要原材料是LDPE和LLDPE颗粒。
- 聚乙烯气垫膜（又称聚乙烯气泡膜）其中分为普通聚乙烯气垫膜与复合聚乙烯气垫膜机组，是当前普遍使用的一种包装材料，不仅具有良好的减震性、抗冲击性、热合性；还有腐蚀性、透明度高等优点，广泛用于家用邮政包装、精密仪器、自行车、聚氨酯家具等多种包装。

- The machine can produce 2 layers of bubble film (flat film+bubble), the extruder is single screw design.
- The main raw materials are LDPE and LLDPE particles.
- Polyethylene air-cushion film (also called polyethylene bubble film), which is divided into two kinds: ordinary polyethylene air-cushion film and composite polyethylene air-cushion film, is a kind of packing material which has been used at present. It not only has good cushioning effect, shock resistance and heat-sealing performance, but also has such advantages as good corrosion resistance and transparency, etc. so it has been widely used for packing, household ware, post parcel, precise instrument, bicycle, polyethylene furniture, etc.



主要技术参数

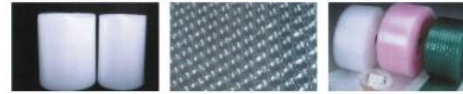
MAIN TECHNICAL VARIABLES

型号 Model	XYPE-1000	XYPE-1200	XYPE-1600	XYPE-1800	XYPE-2000	XYPE-2200
最大宽度 Max.Width	1000mm	1200mm	1600mm	1800mm	2000mm	2200mm
螺杆直径 Screw Diameter	Φ65mm	Φ70mm	Φ75mm	Φ80mm	Φ85mm	Φ90mm
螺杆长径比 Screw L/D	33:1	33:1	33:1	33:1	33:1	33:1
主电机功率 Extruder-Motor Power	18.5kw	22kw	30kw	30kw	37kw	37kw
牵引电机功率 Take-up Motor Power	1.5kw	1.5kw	1.5kw	2.2kw	2.2kw	2.2kw
真空泵功率 Vacuum Pump	1.1kw	1.1kw	1.5kw	1.5kw	2kw	2kw
速度 Speed	5-20m/min	5-20m/min	5-20m/min	5-20m/min	5-20m/min	5-20m/min
总功率 Power	48kw	55kw	65kw	70kw	80kw	90kw

## XYPE-2LB

2 Layer Air Bubble Film Machine-2 Screw

两层气泡膜机-双螺杆挤出



- 本机器可生产2层气泡膜（底层+气泡），挤出机为双螺杆设计。
- 主要原材料是LDPE和LLDPE颗粒。
- 聚乙烯气垫膜（又称聚乙烯气泡膜）其中分为普通聚乙烯气垫膜与复合聚乙烯气垫膜机组，是当前普遍使用的一种包装材料，不仅具有良好的减震性、抗冲击性、热合性；还有腐蚀性、透明度高等优点，广泛用于家用邮政包装、精密仪器、自行车、聚氨酯家具等多种包装。
- 本机可分开控制底层和气泡层，具有操作简单、速度快、产量高、外形美观等优点。

- The machine can produce 2 layers of bubble film (flat film+bubble), the extruder is double screw design.
- The main raw materials are LDPE and LLDPE particles.
- Polyethylene air-cushion film (also called polyethylene bubble film), which is divided into two kinds: ordinary polyethylene air-cushion film and composite polyethylene air-cushion film, is a kind of packing material which has been used at present. It not only has good cushioning effect, shock resistance and heat-sealing performance, but also has such advantages as good corrosion resistance and transparency, etc. so it has been widely used for packing, household ware, post parcel, precise instrument, bicycle, polyethylene furniture, etc.
- The machine can independent control the bottom layer and the bubble layer, and has the advantages of easy operation, high speed, high output and beautiful bubble.



主要技术参数

MAIN TECHNICAL VARIABLES

型号 Model	XYPE-1200	XYPE-1600	XYPE-1800	XYPE-2000	XYPE-2500	XYPE-3000	XYPE-3500
最大宽度 Max.Width	1200mm	1600mm	1800mm	2000mm	2500mm	3000mm	3500mm
螺杆直径 Screw Diameter	Φ65mm Φ50mm	Φ70mm Φ55mm	Φ70mm Φ60mm	Φ75mm Φ65mm	Φ80mm Φ70mm	Φ90mm Φ80mm	Φ105mm Φ85mm
螺杆长径比 Screw L/D	33:1	33:1	33:1	33:1	33:1	33:1	33:1
主电机功率 Extruder-Motor Power	18.5kw 11kw	22kw 15kw	22kw 18.5kw	30kw 18.5kw	22kw 22kw	45kw 30kw	55kw 37kw
牵引电机功率 Take-up Motor Power	1.5kw	2.2kw	2.2kw	2.2kw	3kw	3kw	3kw
真空泵功率 Vacuum Pump	1.1kw	1.5kw	1.5kw	2kw	2.2kw	3kw	3kw
速度 Speed	5-30m/min	5-30m/min	5-30m/min	5-30m/min	5-30m/min	5-30m/min	5-25m/min
总功率 Power	70kw	90kw	105kw	115kw	135kw	158kw	200kw

## XYPEG-5LB

2-5 Layer Air Bubble Film Machine-3 Screws  
2-5层复合型气泡膜机-3螺杆



- 本机适用材料为LDPE和LLDPE粒子。
- 本机器可生产2-5层气泡膜（淋膜层+平膜+气泡+平膜+淋膜层=5层），挤出机由主挤出机和辅挤出机组成，一共3个螺杆。
- 主挤出机由双螺杆设计，可分开控制底层和气泡层，具有操作简单、速度快、产率高、外形美观等优点，可生产气泡膜复合牛皮纸、珍珠棉、PET镀铝膜、共挤膜等产品。通过更换模具来改变气泡直径：Φ6-30mm,产品具有防水、防压、防静电、隔热等作用；广泛应用于家具、五金、建材、电子、快递等包装行业。
- The main raw materials are LDPE and LLDPE particles.
- The machine can produce 2-5 layers of bubble film (Lamination layer + flat film + bubble + flat film + Lamination layer = 5 layer), extruder is composed of main extruder and auxiliary extruder, total 3 screws.
- The main extruder is 2 screws design. It can independent control the bottom layer and the bubble layer, and has the advantages of easy operation, high speed, high output and beautiful bubble, produce laminates Kraft paper, EPE foam, PET aluminum plating film, PE film and other products. By changing the bubble mold roller to change the diameter of bubble Φ6-30mm, products are water proof, pressure proof, antistatic, insulation and so on, widely used in furniture, hand ware, building materials, electronics, courier and other packaging industry.



### 主要技术参数

#### MAIN TECHNICAL VARIABLES

型号 Model	XYPEG-1200	XYPEG-1600	XYPEG-1800	XYPEG-2000	XYPEG-2500	XYPEG-3000	XYPEG-3500
最大宽度 Max.Width	1200mm	1600mm	1800mm	2000mm	2500mm	3000mm	3500mm
螺杆直径 Screw Diameter	Φ65/55mm、 Φ50mm	Φ70/60mm、 Φ65mm	Φ75/60mm、 Φ60mm	Φ80/65mm、 Φ70mm	Φ85/70mm、 Φ75mm	Φ95/80mm、 Φ75mm	Φ110/90mm、 Φ85mm
螺杆长径比 Screw L:D	33:1	33:1	33:1	33:1	33:1	33:1	33:1
主电机功率 Extruder-Motor Power	18.5/11kw、 11kw	22/15kw、 15kw	30/15kw、 15kw	30/18.5kw、 18.5kw	37/22kw、 22kw	45/30kw、 30kw	55/37kw、 37kw
牵引电机功率 Take-up Motor Power	1.5kw	2.2kw	2.2kw	2.2kw	3kw	3kw	3kw
真空泵功率 Vacuum Pump	1.1kw	1.5kw	1.5kw	2kw	2.2kw	3kw	3kw
速度 Speed	5-25m/min	5-25m/min	5-25m/min	5-25m/min	5-25m/min	5-20m/min	5-20m/min
总功率 Power	100kw	120kw	135kw	150kw	168kw	200kw	248kw

## XYFM

Single-side Membrane Laminating Machine  
单面淋膜机



- 本机型为单挤出淋膜复合机组，一次挤出一层流延膜。主要以纸、塑膜、无纺布或铝箔为基材，通过挤出流延膜，使一种或两种基材淋膜或复合，如一次性纸杯淋膜、无纺布淋膜等。
- 挤出流延膜与纸类（牛皮纸、口杯纸、优质纸）、布类、金属箔、塑料薄膜及其它合成材料。广泛适用于纸塑复合、塑料复合、铝塑复合、无纺布淋膜、纸铝塑复合等。
- This machine is a single extruder film composite unit, extruding one layer cast film at a time, Mainly paper, plastic film, non-woven or aluminum foil as the base material. To film or compound one or two base materials by extruding the film. Such as disposable paper cup, non-woven film, etc.
- Extruding PE laminating film suitable application material: kraft paper (paper cup, high quality paper), cloth, Aluminum foil, plastic film and other composite materials. They are widely applicable for paper plastic composite, plastic composite, aluminum composite, non-woven aluminum film, paper aluminum composite, etc.



### 主要技术参数

#### MAIN TECHNICAL VARIABLES

型号 Model	XYFM-800	XYFM-1100	XYFM-1300	XYFM-1600	XYFM-1800	XYFM-2000
模唇长度 Length of mold	1000mm	1300mm	1500mm	1800mm	2000mm	2200mm
淋膜宽度 Width of film	800mm	1100mm	1300mm	1600mm	1800mm	2000mm
速度 Speed	150m/min	150m/min	150m/min	150m/min	150m/min	150m/min
淋膜厚度 Thickness laminating	0.06-0.15mm	0.06-0.15mm	0.06-0.15mm	0.06-0.15mm	0.06-0.15mm	0.06-0.15mm
螺杆直径 Screw Diameter	Φ85mm	Φ90mm	Φ95mm	Φ100mm	Φ105mm	Φ110mm
收卷最大直径 Max.diameter rewinding	1200mm	1200mm	1200mm	1200mm	1200mm	1200mm
放料直径 Material diameter	1200mm	1200mm	1200mm	1200mm	1200mm	1200mm
总功率 Power	60kw	70kw	80kw	100kw	130kw	150kw
机器尺寸 L×W×H	12×6×3.2m	12.5×6×3.2m	13×8×3.2m	13×9×3.2m	13×11×3.2m	13×12×3.2m